

1415 South Utica
Tulsa, Oklahoma 74104

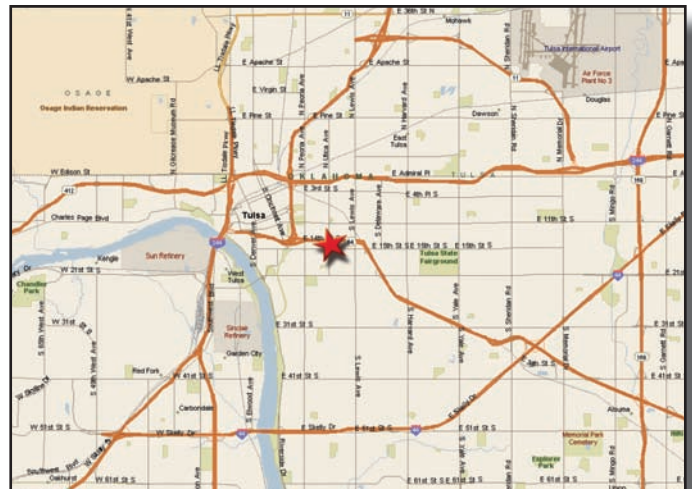
HIGHLIGHTS:

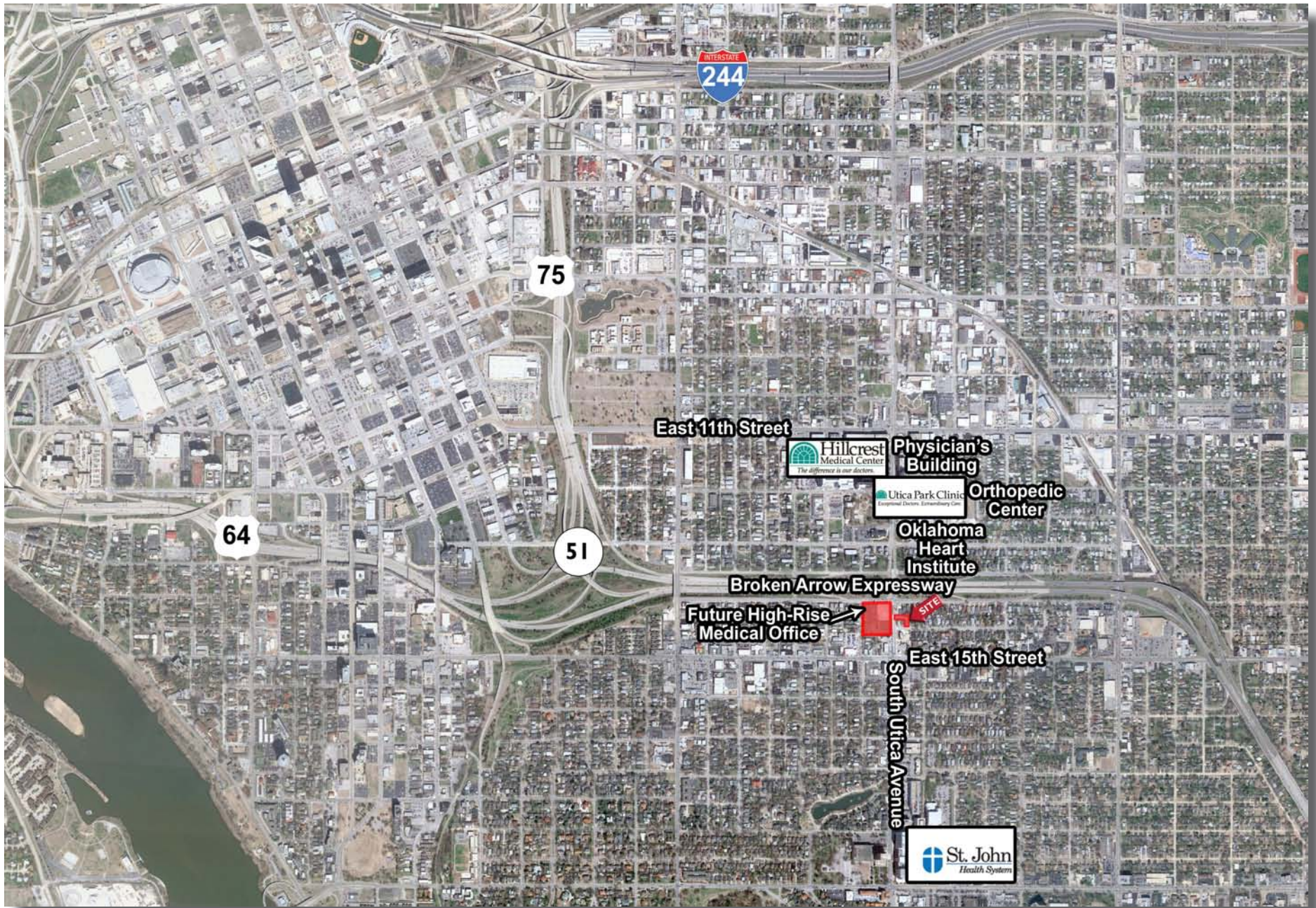
- Price: \$275,000
- Approximately 12,500 square feet of paved and striped parking. Could be used as potential office site.
- Highway accessibility
- Heart of midtown medical corridor
- High traffic counts and visibility
- Restaurants and retail within walking distance
- High-rise medical office across the street is scheduled to start construction soon.

For detailed information contact:

Bruce Bolzle
624 South Boston, Suite 400
Tulsa, Oklahoma 74119
918.728.3419 fax 918.743.4084
www.kmodevelopment.com
bbolzle@kmodevelopment.com

DEMOGRAPHICS	1 MILE	3 MILES	5 MILES
Population	12,920	86,048	194,771
Average Household Income	\$71,287	\$64,678	\$57,052
Daytime Population	31,226	95,379	163,820





INTERSTATE
244

75

64

51

East 11th Street

Hillcrest
Medical Center
The difference is our doctors.

Physician's
Building

Utica Park Clinic
Exceptional Doctors. Extraordinary Care.

Orthopedic
Center

Oklahoma
Heart
Institute

Broken Arrow Expressway

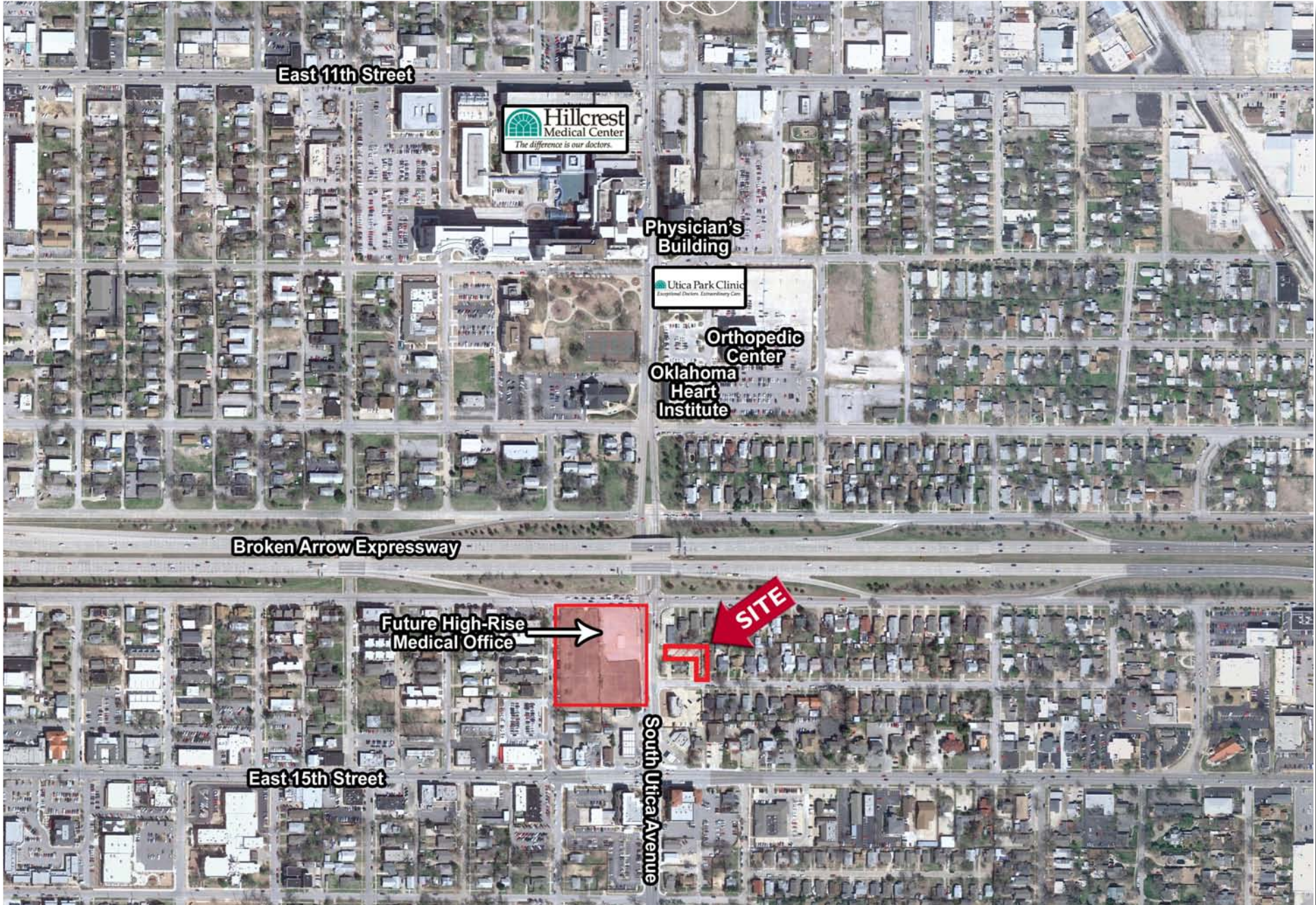
Future High-Rise
Medical Office

East 15th Street

South Utica Avenue

St. John
Health System

SITE



East Side Facing 14th Street



North Side Facing Utica

