

FOR SALE OR LEASE



Lincoln Park Market Place
Joe Harvey Boulevard and Grimes Street
Hobbs, New Mexico 88240

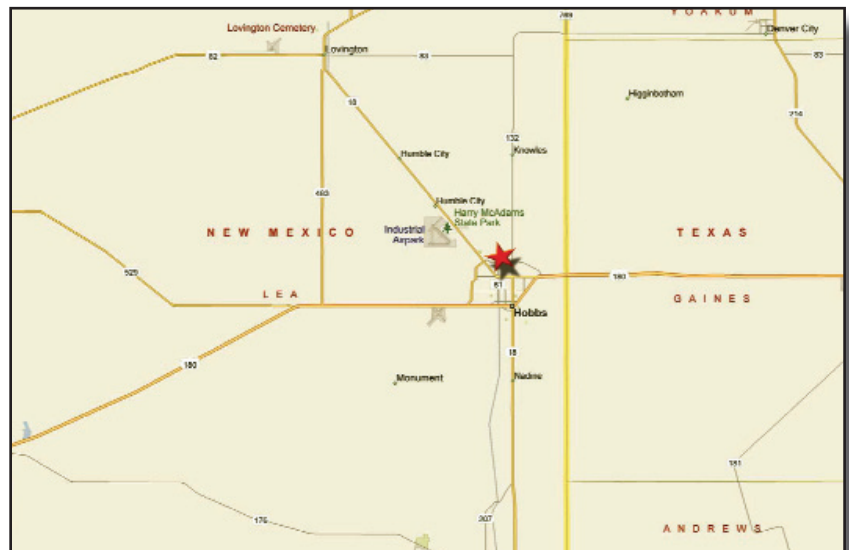
HIGHLIGHTS:

- 18.73 acre master planned commercial development
- Currently available – In-Line 1,600 sf – 8,000 sf
- Pad sites – 0.84 acres – 1.14 acres
- \$2.2 billion new investment going into the Hobbs market area
- New subdivision with more than 1,700 homes planned, platted or under construction
- New Walgreen's on hard corner (Under construction)
- Directly across the street from Home Depot

DEMOGRAPHICS	1 MILE	3 MILES	5 MILES
Population	6,672	26,775	37,499
Average Household Income	\$67,045	\$53,456	\$49,932
Daytime Population	2,229	15,006	19,108

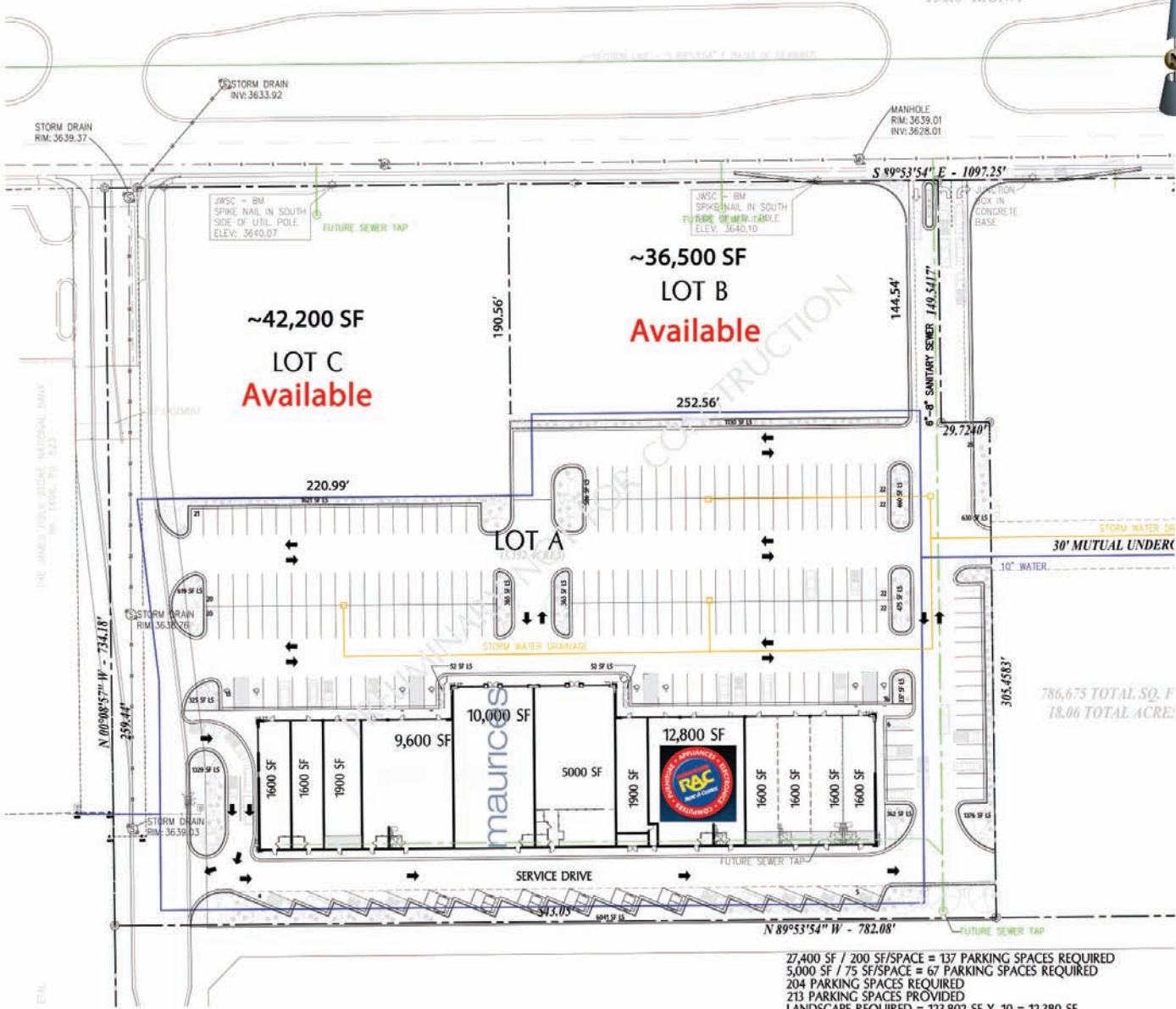
For detailed information contact:

Jonathan Bolzle
624 South Boston, Suite 400
Tulsa, Oklahoma 74119
918.728.3442 fax 918.743.4084
www.kmodevelopment.com
jbolzle@kmodevelopment.com





150.0' R.O.W.



786,675 TOTAL SQ. F
18.06 TOTAL ACRES

27,400 SF / 200 SF/SPACE = 137 PARKING SPACES REQUIRED
 5,000 SF / 75 SF/SPACE = 67 PARKING SPACES REQUIRED
 204 PARKING SPACES PROVIDED
 213 PARKING SPACES PROVIDED
 LANDSCAPE REQUIRED = 123,802 SF X .10 = 12,380 SF
 LANDSCAPE AREA PROVIDED = 16,023 SF
 LANDSCAPE FRONTAGE AREA REQUIRED @ 75% OF 12,380 SF = 9,285 SF.
 LANDSCAPE FRONTAGE AREA REQUIRED = 9,480 SF.