



Terrace Park  
1822 & 1826 East 15th Street  
Tulsa, Oklahoma 74104

**PROPERTY INFORMATION:**

- Rent: \$16.50 psf + utilities
- Available: 1822 East 15th Street - 900 sf  
1826 East 15th Street - 2,899 sf
- Tenant Improvements: Negotiable
- Parking: 42 on-site spaces

**HIGHLIGHTS:**

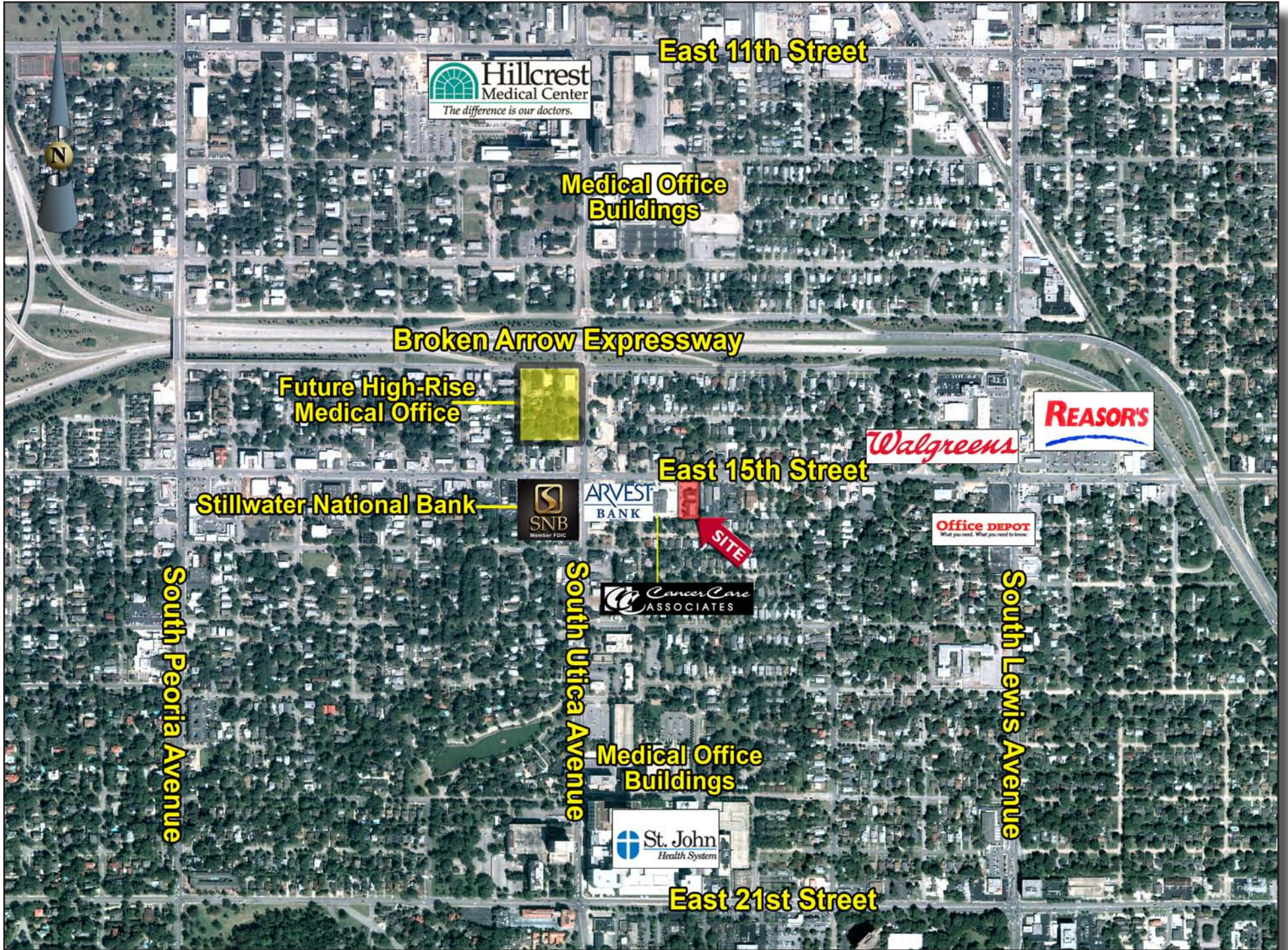
- Single story garden style office & medical building
- Frontage on 15th Street
- Midtown medical corridor, near St. John's & Hillcrest Hospitals
- Convenient curb side parking and easy expressway access
- All spaces are separately metered for utilities

For detailed information contact:

**Jonathan Bolzle**  
624 South Boston, Suite 400  
Tulsa, Oklahoma 74119  
918.728.3442 fax 918.743.4084  
www.kmodevelopment.com  
jbolzle@kmodevelopment.com

DEMOGRAPHICS	1 MILE	3 MILES	5 MILES
Population	11,408	86,450	203,524
Average Household Income	\$48,277	\$56,053	\$64,983
Daytime Population	15,878	76,457	170,101





**Hillcrest**  
Medical Center  
*The difference is our doctors.*

**East 11th Street**

**Medical Office Buildings**

**Broken Arrow Expressway**

**Future High-Rise Medical Office**

**REASOR'S**

**Walgreens**

**East 15th Street**

**Stillwater National Bank**

**SNB**  
Member FDIC

**ARVEST**  
BANK

**SITE**

**Office DEPOT**  
What you need. What you need to know.

**Cancer Care**  
ASSOCIATES

**South Peoria Avenue**

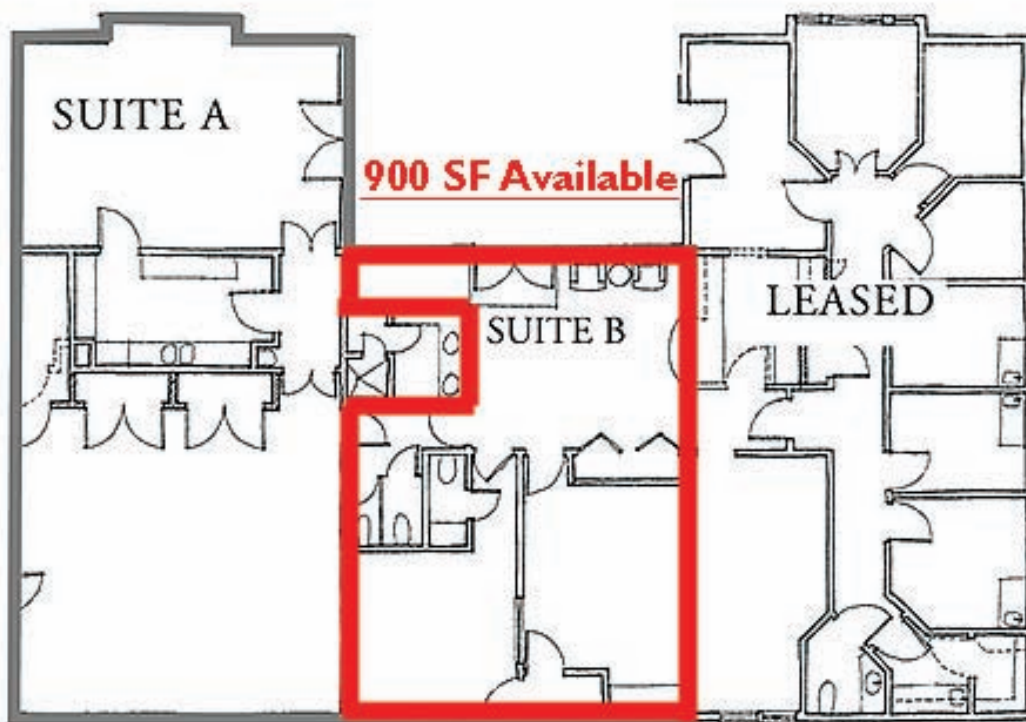
**South Utica Avenue**

**South Lewis Avenue**

**Medical Office Buildings**

**St. John**  
Health System

**East 21st Street**



1822 East 15th Street



1826 East 15th Street